


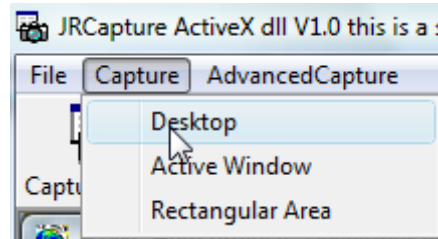
# JR-Capture .netdll

 JRCapture .NET dll JRCapture .NET dll  
insert screen capture functions with a couple of line of code.  
The controllib is designed for use with all .net IDE's.

If you need the older  version load it from [www.jrsoft.de](http://www.jrsoft.de).

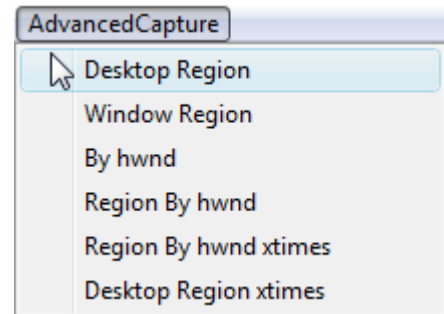
## Features:

- ❑ Capture Desktop.
- ❑ Capture active window.
- ❑ Capture area.
- ❑ Capture client area.
- ❑ Capture delayed.
- ❑ Capture with and without mousepointer.
- ❑ Capture with sound.



## Advanced Features:

- ❑ Capture desktop area.
- ❑ Capture window area.
- ❑ Capture in use of object handle (hwnd).
- ❑ Capture are in use of handle.



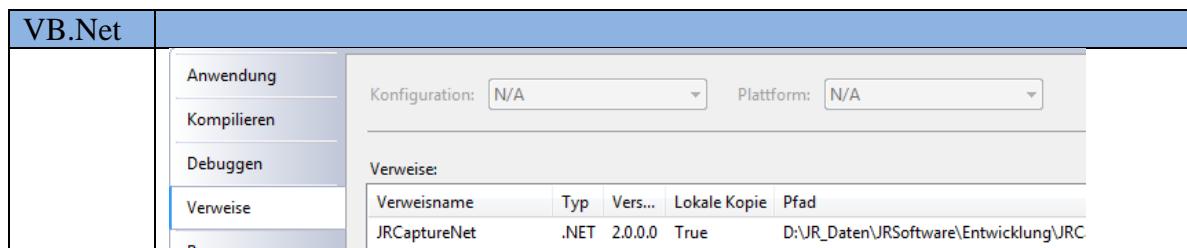
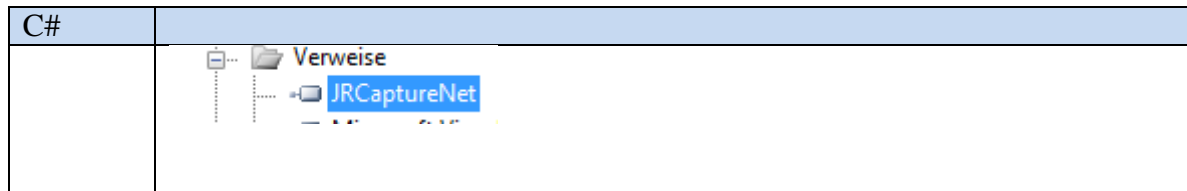
Auch diese Funktionen wahlweise mit oder ohne Mauszeiger.

❑ Beide Controls sind signiert. (Wichtig wenn Sie Ihre Endanwendung zertifizieren lassen wollen).

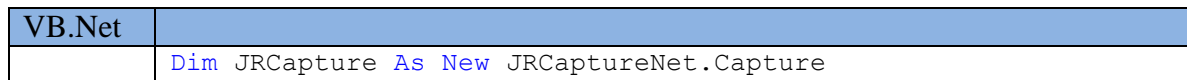
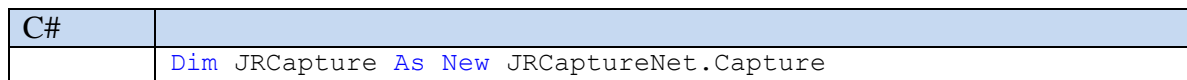
❑ Jeweils mit Demoprojekt in C# und VB.net

## Make it running:

Set a reference in your system to JRCaptureNET.dll



Create a new JRCapture object



## Now its easy to make copy of screen items:

Copy the complete desktop as follows

C#	
	<pre>//capture Desktop JRCapture.CaptureDesktop(); PictureBox1.Image = JRCapture.Picture;</pre>

VB.Net	
	<pre>'capture Desktop JRCapture.CaptureDesktop() PictureBox1.Image = JRCapture.Picture</pre>

The active window

C#	
	<pre>//capture active Window PictureBox1.Image = JRCapture.CaptureWin();</pre>

VB.Net	
	<pre>'capture active Window PictureBox1.Image = JRCapture.CaptureWin</pre>

A area created with the mouse

C#	
	<pre>//capture rectangel area if (JRCapture.CaptureArea() != null) {     PictureBox1.Image = JRCapture.Picture; }</pre>

VB.Net	
	<pre>'capture rectangel area If Not IsNothing(JRCapture.CaptureArea) Then     PictureBox1.Image = JRCapture.Picture End If</pre>

Or an object from his handle

C#	
	<pre>//capture a Object or Window by his handle PictureBox1.Image = JRCapture.CaptureByHWND((long)your.Handle);</pre>

VB.Net	
	<pre>'capture a Object or Window by his handle PictureBox1.Image = JRCapture.CaptureByHWND(your.Handle)</pre>

## Work with the captured PictureBox:

Do anything with it or use the save function

C#	
	JRCapture.Save (Application.StartupPath + "test.png"); JRCapture.Save (Application.StartupPath + "test.bmp");

VB.Net	
	JRCapture.Save (Application.StartupPath & "test.png") JRCapture.Save (Application.StartupPath & "test.bmp")

## Capture Settings:

The capture functions uses the following settings

C#	
	JRCapture.PlaySound = true /false;
	JRCapture.CaptureOnlyClientArea = true /false;
	JRCapture.CaptureMouseCursor = true /false;
	JRCapture.CaptureDelayMs = long value;
	JRCapture.CopyToClipboard = true /false;

VB.Net	
	JRCapture.PlaySound = true /false
	JRCapture.CaptureOnlyClientArea = true /false
	JRCapture.CaptureMouseCursor = true /false
	JRCapture.CaptureDelayMs = long value
	JRCapture.CopyToClipboard = true /false

# Advanced Capture Functions

## Copy an area of the desktop

C#	
	<pre>//capture a region of the Desktop  //define the region to capture JRCapture.CaptureRegionHeight = 400; JRCapture.CaptureRegionLeft = 300; JRCapture.CaptureRegionTop = 200; JRCapture.CaptureRegionWidth = 400;  //activate the region capture tool JRCapture.CaptureRegion = true; PictureBox1.Image = JRCapture.CaptureDesktop(); //deactivate the region capture tool JRCapture.CaptureRegion = false;</pre>

VB.Net	
	<pre>'capture a region of the Desktop 'define the region to capture JRCapture.CaptureRegionHeight = 400 JRCapture.CaptureRegionLeft = 300 JRCapture.CaptureRegionTop = 200 JRCapture.CaptureRegionWidth = 400  'activate the region capture tool JRCapture.CaptureRegion = True PictureBox1.Image = JRCapture.CaptureDesktop() 'deactivate the region capture tool JRCapture.CaptureRegion = False</pre>

## Copy an area of the active window

C#	
	<pre>//capture a region in the active Window  //define the capture Region JRCapture.CaptureRegionHeight = 400; JRCapture.CaptureRegionLeft = 300; JRCapture.CaptureRegionTop = 200; JRCapture.CaptureRegionWidth = 400;  //activate the region capture tool JRCapture.CaptureRegion = true; PictureBox1.Image = JRCapture.CaptureWin(); //deactivate the region capture tool JRCapture.CaptureRegion = false;</pre>

VB.Net	
	<pre> 'capture a region in the active Window  'define the capture Region JRCapture.CaptureRegionHeight = 400 JRCapture.CaptureRegionLeft = 300 JRCapture.CaptureRegionTop = 200 JRCapture.CaptureRegionWidth = 400  'activate the region capture tool JRCapture.CaptureRegion = True PictureBox1.Image = JRCapture.CaptureWin 'deactivate the region capture tool JRCapture.CaptureRegion = False </pre>

**Or copy an area of an object in use of the handle**

C#	
	<pre> //capture a region of an Object or Window by his handle  //define the capture Region JRCapture.CaptureRegionHeight = 50; JRCapture.CaptureRegionLeft = 5; JRCapture.CaptureRegionTop = 5; JRCapture.CaptureRegionWidth = 50;  //activate the region capture tool JRCapture.CaptureRegion = true; PictureBox1.Image = JRCapture.CaptureByHWND((long)your.Handle); //deactivate the region capture tool JRCapture.CaptureRegion = false; </pre>

VB.Net	
	<pre> 'capture a region of an Object or Window by his handle  'define the capture Region JRCapture.CaptureRegionHeight = 50 JRCapture.CaptureRegionLeft = 5 JRCapture.CaptureRegionTop = 5 JRCapture.CaptureRegionWidth = 50  'activate the region capture tool JRCapture.CaptureRegion = True PictureBox1.Image = JRCapture.CaptureByHWND(your.Handle) 'deactivate the region capture tool JRCapture.CaptureRegion = False </pre>

## JRCapture licensing:

Use the following settings

C#	
	JRCapture.SerialNumber = 0;
	JRCapture.RegCode = 0;

VB.Net	
	JRCapture.SerialNumber = 0
	JRCapture.RegCode = 0

Get your registration datas under [www.jrsoft.de](http://www.jrsoft.de)